

Halo 2 Counter-Sink (#863)

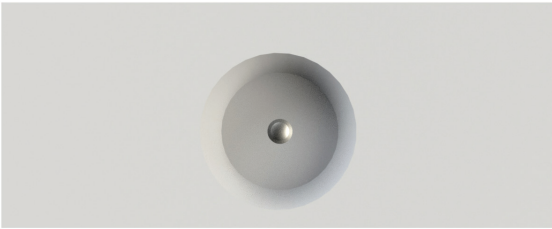
16.75" x 16.75"

GENERAL SPECIFICATIONS:

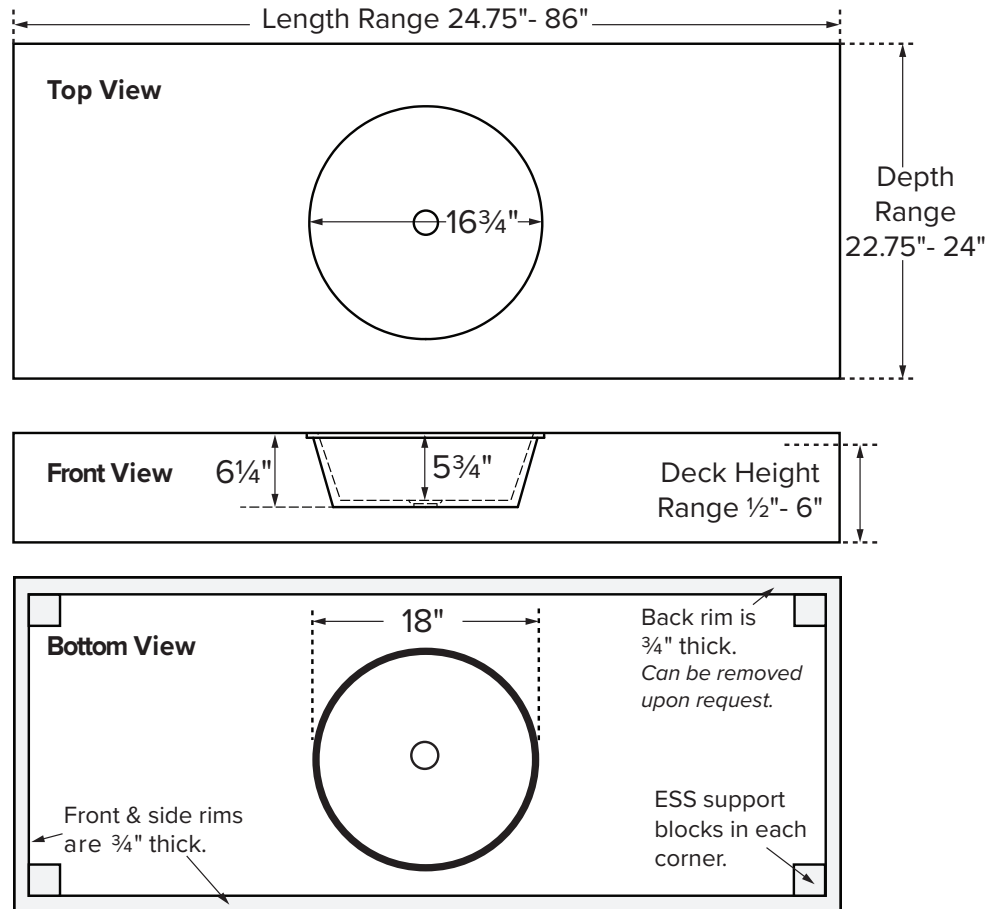
Material - SculptureStone®

Installation - Vanity or Wall Mount

NOTE: Bowl dimensions shown above.
Counter-top size is custom.



[GO TO HTTPS://CONFIGURATOR.MTIBATHS.COM](https://configurator.mtibaths.com)
TO CREATE YOUR CUSTOM COUNTERSINK



IMPORTANT ORDERING & INSTALLATION INFORMATION:

- Due to the handcrafted nature of this product, please allow for a tolerance of $\pm\frac{1}{4}"$ for overall dimensions and $\pm\frac{1}{2}"$ for bowl placement.
- Corner support blocks are necessary only when deck height is over 1".
- All four sides will be finished standard, unless it is a wall mount, or requested otherwise.
- Carefully review inside vanity specifications to ensure that there is proper clearance to accommodate the bowl, drain and optional integrated overflow, if applicable.
- Please take into consideration the thickness of material under the countertop when positioning sink bowl, using a deck-mounted faucet or adding an integrated overflow.
- Outside of overflow housing protrudes approx. $\frac{3}{4}"$ from the bowl and may impact bowl placement.

See the "Boutique Collection Counter-Sink Installation & Operation Manual" included with delivery or go to: mtibaths.com/support/installation for all the information necessary to install the sink. MTI's Customer Service Department is available Monday-Friday 8am-6pm EST at 800-783-8827 or customerservice@mtibaths.com to answer any questions pertaining to ordering or installation.

