



Designer Collection Tubs

Kahlo 2

MODEL # 142

66" x 36" x 19.5"

GENERAL SPECIFICATIONS

Material - Acrylic

Installation - Drop-in or Undermount

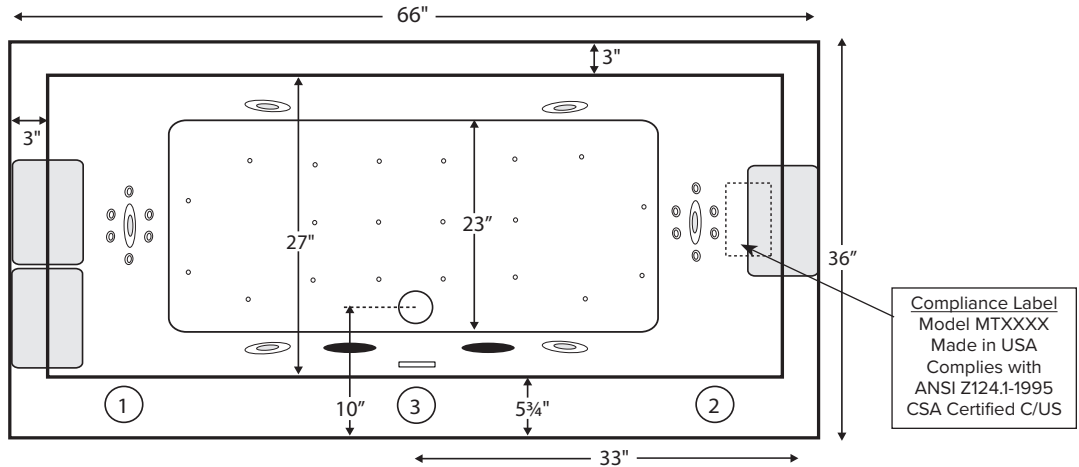
Plumbed Weight - 120 lbs / 54 kg

Soaker Weight - 90 lbs / 41 kg

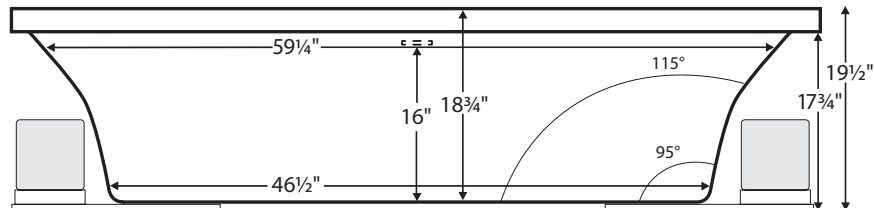
Average Fill - 60 gal to above jet level

Maximum Fill - 85 gal to overflow

NOTE: Filling this tub to the maximum may require an above average size or dedicated water heater.



The tub features a round integrated overflow with direct toe tap drain connection directly above rough-in pipe. Numbered areas on tub deck represent possible locations to install cleaning systems, faucets and other fixtures. Shown with Air Massage and Ultra Whirlpool Package.



IMPORTANT:
Air baths and tubs with a pre-leveled foam base or frame system add 2-3" to overall tub height.

IMPORTANT ORDERING & INSTALLATION INFORMATION

- Before ordering or installing, please consider future access to equipment.
- Add proper bedding compound to fully level and support bottom of tub.
- When equipped with an air bath package, pre-leveled foam base or frame system, overall tub height is increased by approx. 2-3" and is designed to install on a flat, level subfloor.
- Radiance placed on airbath floor will affect placement of air jets.
- System components may extend beyond the perimeter of deck.
- Please measure tub **on-site** before building tub decking.
- Advise MTI when planning to use a glass enclosure. Relocation of controls may be necessary.
- Suction and control locations may vary.

ELECTRICAL COMPONENTS & SPECIFICATIONS

Hydrotherapy Package	Components Included	GFCI / 110V
Standard Whirlpool	2-bhp pump	1-15 amp
Stream Bath	1/2-bhp	1-15 amp
Microbubbles	Microbubbles pump	1-15 amp
Ultra Whirlpool	2-bhp pump x 2, inline heater, ozone	2-20 amp
Air Massage	heated blower	1-15 amp
Air Massage Elite	heated blower, chromatherapy	1-15 amp
Air Massage w/ Stream Bath	1/2-bhp pump, heated blower	1-15 amp
Air Massage Elite w/ Stream Bath	1/2-bhp pump, heated blower, chromatherapy	1-15 amp

Hydrotherapy Package	Components Included	GFCI / 110V
Microbubbles with Air	Microbubbles pump, heated blower	1-20 amp
Microbubbles with Air Elite	Microbubbles pump, heated blower, chromatherapy	2-15 amp
Air with Whirlpool	2-bhp pump, heated blower	2-15 amp
Air with Ultra Whirlpool	2-bhp pump x 2, inline heater, heated blower, ozone	2-20 amp
Air Elite with Whirlpool	2-bhp pump, heated blower, chromatherapy	2-15 amp
Air Elite with Ultra Whirlpool	2-bhp pump x 2, inline heater, heated blower, chromatherapy, ozone	2-20 amp

See the Installation & Operation Manual for more details.
MTI's Customer Service Monday-Friday 8am-6pm EST
800-783-8827 or service@mtibaths.com

- Before discarding tub crate, check for accessories that may be packaged inside.
- All product measurements are $\pm 1/2"$.
- Specifications and configurations are subject to change without notice.
- Measurements herein supersede all others published prior to publication date below.

CSA # MTDS-142

©2021 by MTI Baths, Inc. Modification Rights Reserved



- Aromatherapy is eliminated for undermount applications
- Air Baths, Pre-Leveled Foam Base or Frame Systems increase overall height by 2-3".

Hydrotherapy Packages	Package Contents	Part #	MSRP
Soaker	Soaking bath - no jets	S142-DI	\$2,575
		S142-UM	
Stream Bath	6 side vents, 2 end vents, 1/2 bhp pump	SM142-DI	\$4,875
		SM142-UM	
Microbubbles	1 microbubbles infusion port and pump	M142-DI	\$5,525
		M142-UM	
Air Massage	20 air jets, heated air blower, Aromatherapy, pre-leveled foam base	AST142-DI	\$5,775
		AST142-UM	
Air Massage Elite	30 air jets, heated air blower, Aromatherapy, Chromatherapy LED lighting, Spa Mode, pre-leveled foam base	AE142-DI	\$7,340
		AE142-UM	
Stream Bath with Air Massage	6 side vents, 2 end vents, 1/2 bhp pump, 20 air jets, heated air blower, Aromatherapy, pre-leveled foam base	ASTSM142-DI	\$7,625
		ASTSM142-UM	
Stream Bath with Air Massage Elite	6 side vents, 2 end vents, 1/2 bhp pump, 30 air jets, heated air blower, Aromatherapy, Chromatherapy LED lighting, Spa Mode, pre-leveled foam base	AESM142-DI	\$9,315
		AESM142-UM	
Microbubbles with Air Massage	1 microbubbles infusion port and pump, 20 air jets, heated air blower, Aromatherapy, pre-leveled foam base	ASTM142-DI	\$7,825
		ASTM142-UM	
Microbubbles with Air Massage Elite	1 microbubbles infusion port and pump, 30 air jets, heated air blower, Aromatherapy, Chromatherapy LED lighting, Spa Mode, pre-leveled foam base	AEM142-DI	\$9,175
		AEM142-UM	
Standard Whirlpool	6 point-massage jets, 2-bhp pump	P142-DI	\$4,675
		P142-UM	
Ultra Whirlpool	6 point-massage jets, 12 micro-jets with Tsubo massage, 2 2-bhp pumps, inline heater, Ozone	P142U-DI	\$7,025
		P142U-UM	
Air Massage with Standard Whirlpool	6 point-massage jets, 2-bhp pump, 20 air jets, heated air blower, Aromatherapy, pre-leveled foam base	AW142-DI	\$8,025
		AW142-UM	
Air Massage with Ultra Whirlpool	6 point-massage jets, 12 micro-jets with Tsubo massage, 2 2-bhp pumps, inline heater, 20 air jets, heated air blower, Aromatherapy, Ozone, pre-leveled foam base	AU142-DI	\$10,525
		AU142-UM	
Air Massage Elite with Standard Whirlpool	6 point-massage jets, 2-bhp pump, 30 air jets, heated air blower, Aromatherapy, Chromatherapy LED lighting, Spa Mode, pre-leveled foam base	AEAP142-DI	\$9,425
		AEAP142-UM	
Air Massage Elite with Ultra Whirlpool	6 point-massage jets, 12 micro-jets with Tsubo massage, 2 2-bhp pumps, inline heater, 30 air jets, heated air blower, Aromatherapy, Ozone, Chromatherapy LED lighting, Spa Mode, pre-leveled foam base	AEAP142U-DI	\$12,175
		AEAP142U-UM	

RECOMMENDED SENSORY THERAPIES

Chromatherapy

(LE) **\$695** underwater lighting
 2 LED lights included

Audiotherapy

(STEREOBT) **\$1,200** 2 transducers with bluetooth and amplifier
 (BTREMOTE) **\$490** bluetooth remote

(STEREOH202) **\$1,450** 4 transducers amplifier not included

Thermaaltherapy

(RAD100) **\$1,400** Radiance®
 2 heated zones included
 (HTISOAK) **\$785**



For more information on options and accessories go to Acrylic Tub Options on mtibaths.com

Kahlo 2
MODEL # 142

Options

Must be ordered at time of purchase.

Standard Colors White (CWH)
Biscuit (CBS)

Please call for availability of special colors.

Quick Ship reduces lead time (QSPRI) **\$380**

Please call for availability

Inline Heater maintains water temperature
For Soaker or Air Baths (HTISOAK) \$785
Includes a recirculating pump

Cannot be combined with Microbubbles.

Virtual Spout high-flow integrated tub filler (FPMJ) **\$385**

Must specify stub-out location on order. See page 1 for location options.

Grab Bars from **\$275**

Selections vary. Personalization available.

Textured, Slip-Resistant Bottom (TXTBTM) \$100

Compliant with ASTM C 1028-07 friction coefficient.

Accessories

Pillows from **\$145**

Teak Bath Mat (TKMAT3018) \$650

Custom sizes also available. Contact MTI for details and pricing.

Teak Tub Tray \$400

Slatted (TK-TRAY1), Solid (TK-TRAY2)

Hydrotherapy Equipment & Cleaning Systems

Must be ordered at time of purchase.

Inline Heater maintains water temperature
For Whirlpools or Stream Bath (HTI) \$545

Uses existing pump

Cannot be combined with Microbubbles.

Whirlpool Cleaning Systems

Fill-Flush (FFSO) \$560

Simple Touch (FFE) \$915

Must specify stub-out location on order. See page 1 for location options.

Whirlpool Jets Pump upgrade may be advisable for optimal performance when adding jets.

Point-Massage Jet

Extra Point-Massage Jet (EJ) **\$300**

Micro-Jet from **\$345**

Jet styles and packages vary. Personalization available.

Pump Upgrade - 3-bhp (PUMP3) \$300

Jet Trim Kits

For Standard Whirlpool

Chrome (TRC) **\$235**, Brushed Nickel (TRBN) **\$595**

For Ultra Whirlpool

Chrome (TRCU) **\$320**, Brushed Nickel (TRBNU) **\$820**

Other finishes available.

Ozonator (OZONE) \$490

Cannot be added to soakers or airbaths without combination hydrotherapy package or HTISOAK.

Installation Options *Must be ordered at time of purchase.*

Pre-Leveled Foam Base (PLFOAM) \$255

All airbaths include a pre-leveled foam base.

Pre-Leveled Frame and Foam Base (PLF) \$630

Pre-Leveled Frame and Foam Base with Skirting

For pricing and details go to mtibaths.com

Tile Flange

Factory-Installed on 3 sides - rigid ABS (TFK3) \$190

Field Install Kit - includes rigid ABS & adhesive (TFKNI) \$175

IMPORTANT: *Must specify flange location(s) on order of Factory-Installed Flange. Not available with optional Low-Profile Rim.*

Drains & Overflow Kits *Must be ordered at time of purchase*

Integrated Toe Tap

Slotted Overflow

PVC drain - Chrome (SLOTIOC) included

Finish Upcharge

Brushed Nickel (SLOTIOBNU) **+\$60**

Polished Nickel (SLOTIOPNU) **+\$100**

White (SLOTIOWHU) **+\$60**

Round Overflow

Chrome (RIOBC) may substitute slotted overflow

Finish Upcharge

Brushed Nickel (RIOBN) **+\$60**

Polished Nickel (RIOPN) **+\$100**

White (RIOWH) **+\$60**

