

the hottest APPLIANCES * CABINETS * TILE * FIXTURES * LIGHTING * AND MORE...

Woman's Day Specials

KITCHENS & BATHS

makeovers
to inspire
you

ENTER FOR
A CHANCE TO
win
\$25,000
IN CASH
See p. 94

327

IDEAS + SOURCES
FROM THE PROS

**SOLUTIONS
FOR EVERY
BUDGET**

Volume XXI, Number 2
U.S. \$5.99
Display until December 12, 2011
womansday.com/specials



baths

ALL ABOUT THE HOUSE
location
RICHMOND, VA
built
1940
house style
COTTAGE
2,000 SQ. FT.
3 BEDROOMS
2.5 BATHS

RAISE A GLASS
A frameless 3/4" clear glass door from Binswanger (binswangerglass.com) allows light into the shower.

LINE THE WALLS
Horizontal 1" x 6" wood planks are painted in Benjamin Moore's Decorators White (\$41.99 per gallon; benjaminmoore.com).

PLAY WITH COLOR
Amid the 2" x 8" subway tiles (\$6.58 per sq. ft.; dal-tile.com), a surprising inset of ice-blue-glass mosaic tiles draws attention.

SAVE SPACE Mounting the Perrin & Rowe faucets (\$889; rohhome.com) on the wall eliminates the need for a tub surround.

ADD LUXURY A freestanding deep soaking tub by MTI Whirlpools (\$2,078; mtlwhirlpools.com) offers room for relaxation.

SOOTHE TIRED FEET
Along with providing a slip-resistant surface, massaging glass tile "river rocks" (\$26.61 per sq. ft.; morristile.net) treat the owners' feet.

HEAT UP Dark slate tiles (\$10.64 per sq. ft.; bvslate.com) ground the space with darker tones. Radiant heating under the floors warms up the room.

small wonder

With spa-quality upgrades (heated floors! river rock shower tiles!), this miniature master bath offers the lap of luxury

WRITTEN BY BERNADETTE BACZYNSKI PHOTOGRAPHS BY TONY GIAMMARINO PROP STYLING BY MONA DWORKIN

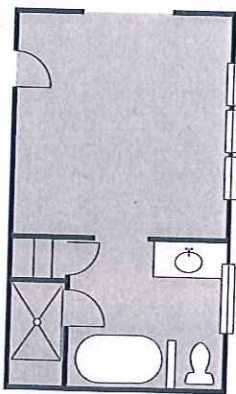


Architects Shelley Myers, 38, and Jack Hasten, 58, know that good things come in small packages. So when they added on to the Richmond, Virginia, home they share with sons Frederick, 9, and Mason, 7, they made the most of their 96-square-foot master bath, squeezing in a deep soaking tub, a tiled shower, a custom vanity and oversized windows. Now, the couple is clearly living large.

MAKE IT FIT A 4-ft.-high half-wall creates privacy for the toilet. Double casement windows from Jeld-Wen (Jeld-wen.com) open up the room.



GO WIDE A Verso 120 trough sink (\$1,445; hastingstilebath.com)—under Bistro sconces from Restoration Hardware (\$149 each; restorationhardware.com)—is spacious enough for two.



FLOOR PLAN The couple used every inch of the space, even adding a reeded-glass inset pocket door for privacy from Custom View (customviewllc.com).

FLOOR PLAN: STEVE STANKIEWICZ