



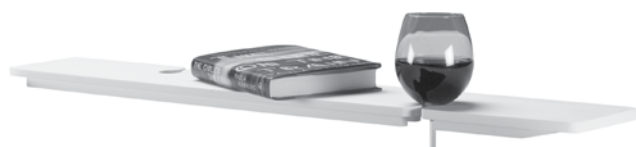
ESS Tub Tray

Part # SSTRAY1 **\$440**

Must specify MTI Boutique Collection tub model on order.

Not compatible with Juliet or Halo models.

Color / finish matched when ordered with an ESS tub.



ESS Tub Tray with Stemware Holder

Part # SSTRAY2 **\$440**

Must specify MTI Boutique Collection tub model on order.

Not compatible with Juliet or Halo models.

Color / finish matched when ordered with an ESS tub.



ESS Tub Tray Construction and Standard Features

- Constructed of MTI's Engineered Solid Stone (ESS[®]) material.
- Smooth, durable surface combines beauty with practicality.
- Ideal surface for holding a book or beverage or bath accessories.
- Custom fit for all MTI ESS bathtubs, except Juliet and Halo models.
- Available in two styles.
- Unsurpassed quality and workmanship.
- Handcrafted in the USA.

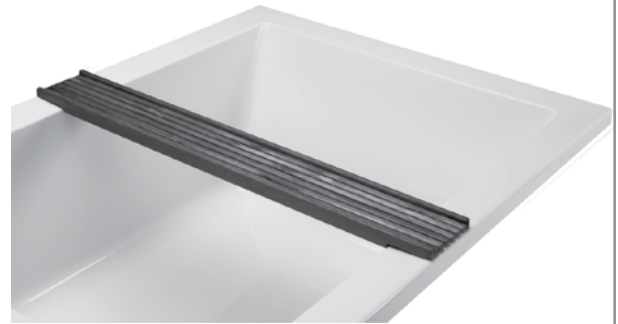
Note: Custom sizes also available for both styles. Call MTI for pricing.



Teak Tub Tray - Slatted

Part # TK-TRAY \$415

*Must specify MTI Boutique Collection tub model on order.
Not compatible with Juliet or Halo models.*

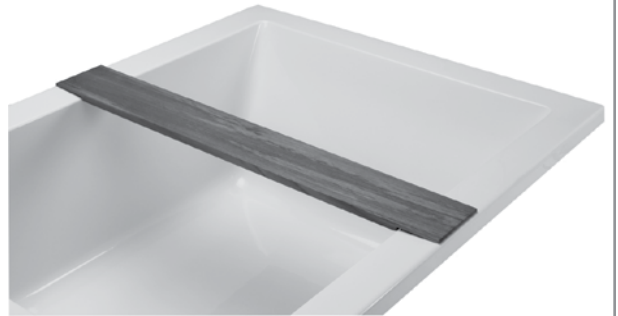


*Designer Collection acrylic tub shown above.
Also fits most Boutique Collection models.*

Teak Tub Tray - Solid (non-slatted)

Part # TK-TRAY2 \$415

*Must specify MTI Boutique Collection tub model on order.
Not compatible with Juliet or Halo models.*



*Designer Collection acrylic tub shown above.
Also fits most Boutique Collection models.*

Teak Bath Mat - Part # TK-MAT3018 \$430

Size: 30" x 17.5" x 1"

- Slats are spaced only 1/8" apart to ensure a comfortable, safe surface for feet.
- Slats are 1-1/2" wide x 1/2" thick and are permanently joined to 2" wide x 1" thick support boards with glue and countersunk marine-grade stainless steel screws.

Custom sizes also available. Call MTI for pricing.



Teak Accessories Construction and Standard Features

- Smooth, durable teak combines beauty with practicality.
- Constructed of the finest grade of Genuine Teak* (*see note at bottom of page*).
- Teak has the natural ability to ward off fungi, mold and mildew.
- Teak is inherently slip-resistant.
- Unsurpassed quality and workmanship.
- Handcrafted and milled in the USA.
- Custom sizes are also available. Call MTI for a quote.

***Environmentally Responsible**

MTI uses only 100% U.S.-certified legal, reclaimed, sustainable teak. A replacement tree is planted 20 years before a tree is harvested. The teak used in MTI products is the finest in the world and is imported from reputable suppliers bordering Burma (Myanmar), not from Burma. MTI suppliers observe all international laws regarding labor and conservation. All of the Genuine Teak used by MTI is harvested from reclaimed forests and is absolutely not endangering or depleting rain forests.

