

# Custom Shower Base Request For Quote - End or Offset Drain

Universal Shower Bases

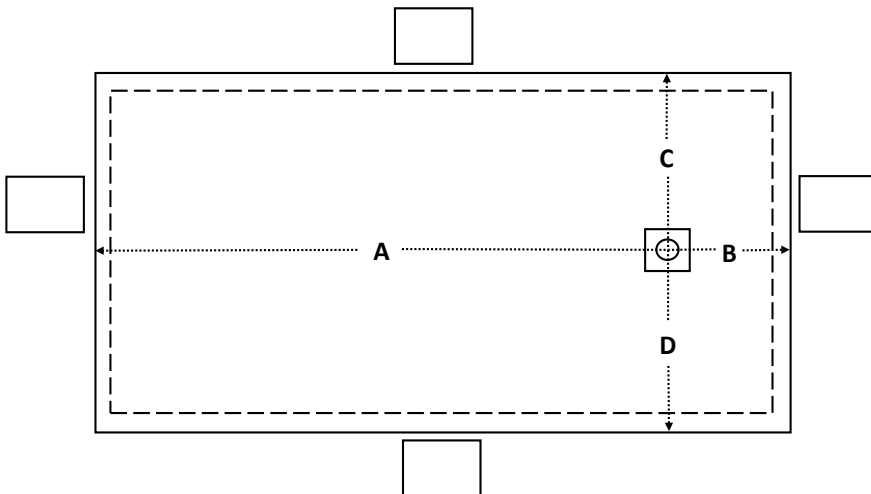
This form is for use with any end or offset drain configuration. To receive a quote, an authorized MTI dealer must submit this worksheet to [quotes@mtibaths.com](mailto:quotes@mtibaths.com). To find a dealer, go to <https://mtibaths.com/dealer-locator/>.

### GENERAL SPECIFICATIONS:

Material - SculptureStone®  
 Threshold - Low Profile, Multiple Threshold  
 Drain Location - End/Offset

The information below must be received by MTI to provide a quote*:	
*Company Name:	*Zip Code:
*Email:	
Phone:	FAX:
Contact Name:	
PO/Job Name:	Date:

ORDER FORM - Size of base may not exceed 78"Lx48"W	
<b>Color:</b> Available in matte finish only	
White, standard	
Biscuit, upcharge applies	
<b>Drain:</b> Chrome finish included	
<b>Drain Location:</b> from center drain	
Measurement A Min. 8", Max. 66"	
Measurement B Min. 8", Max. 39"	
Measurement C Min. 8", Max. 40" (overall max width: C+D=48")	
Measurement D Min. 8", Max. 40" (overall max width: C+D=48")	
Overall Length & Width:	
Length (A+B=Length) Min. 28"- Max. 78" To achieve max. length, measurement B must be at least 12"	
Width (C+D=Width) Min. 28"- Max. 48"	
<b>Overall Base Height:</b> heights are fixed and based upon overall base length	
Base Length	Base Height
Up to 60"	2.5"
Over 60" up to 78"	3"



### WORKSHEET INSTRUCTIONS:

- Fill out the **ORDER FORM** section on this sheet.
- Drain location is from center of drain to **outside** edge of base along A, B, C, & D.
- In the above diagram, write **TF** (tile flange) in the box adjacent to any side that will abut the framed wall. Tile flanged sides will be 1" wide; all other sides will be 2" wide. If submitting your own drawing, be sure to indicate flanged sides and include a copy of the completed **ORDER FORM**.

Visit <https://info.mtibaths.com> details about the factory installed ABS tiling flange.

\*Incomplete information may result in an unprocessed request for quote. Please be sure to provide your Company Name, Zip Code, & contact information on the submitted form. Thank you.

Homeowner/Contractor Signature \_\_\_\_\_

Distributor Signature \_\_\_\_\_

### PRODUCT FEATURES:

- Low-profile threshold. May be recessed into the floor to achieve lowest possible threshold.
- Drain opening is 3.5" diameter with 4.25" square grid drain cover.
- Number and location of 1" tile flanged sides must be specified on order
- Matte finish SculptureStone® is inherently slip resistant and compliant with ASTM C 1028-07 coefficient of friction test.

